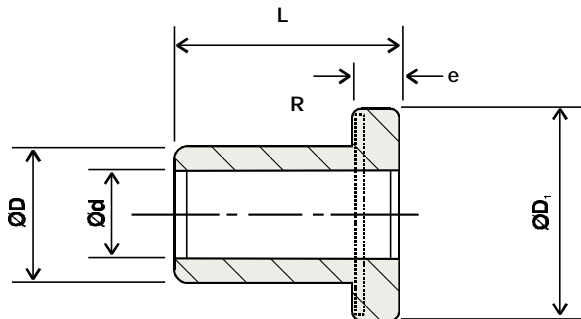


## OIL IMPREGNATED BRONZE BUSHINGS

Type Ref.	Ød (G7)			ØD (s7)			Ød <sub>1</sub>	e	Basic L
	Basic	Min.	Max.	Basic	Min.	Max.			
AMF 0103	1	1.002	1.012	3	3.014	3.024	5	1	2
AMF 0205	2	2.002	2.012	5	5.019	5.031	8	1.5	3
AMF 0206	2.5	2.502	5.512	6	6.019	6.031	9	1.5	3
AMF 0306	3	3.002	3.012	6	6.019	6.031	9	1.5	4
AMF 0408	4	4.004	4.016	8	8.023	8.38	12	2	3 4 6 8 12
AMF 0509	5	5.004	5.016	9	9.023	9.038	13	2	4 5 8
AMF 0610	6	6.004	6.016	10	10.023	10.038	14	2	4 6 10
AMF 0711	7	7.005	7.020	11	11.028	11.046	15	2	5 8
AMF 0812	8	8.005	8.020	12	12.028	12.046	16	2	6 8 12 16
AMF 0914	9	9.005	9.020	14	14.028	14.046	19	2.5	6 10 14
AMF 1013	10	10.005	10.020	13	13.028	13.046	17	2.5	10 16 20
AMF 1015	10	10.005	10.020	15	15.028	15.046	21	3	10 16 20
AMF 1016	10	10.005	10.020	16	16.028	16.046	22	3	8 10 16
AMF 1215	12	12.006	12.024	15	15.028	15.046	21	3	12 16 20
AMF 1217	12	12.006	12.024	17	17.028	17.046	23	3	12 16 20 25
AMF 1218	12	12.006	12.024	18	18.028	18.046	24	3	8 12 20
AMF 1420	14	14.006	14.024	20	20.035	20.056	26	3	10 14 20
AMF 1519	15	15.006	15.024	19	19.035	19.056	25	3	16 20 25
AMF 1521	15	15.006	15.024	21	21.035	21.056	27	3	10 15 20 25
AMF 1620	16	16.006	16.024	20	20.035	20.056	27	3	16 20 25
AMF 1622	16	16.006	16.024	22	22.035	22.056	28	3	12 16 20 25
AMF 1824	18	18.006	18.024	24	24.035	24.056	30	3	12 18 22 30
AMF 2024	20	20.007	20.020	24	24.035	24.056	30	3	16 20 25
AMF 2026	20	20.007	20.028	26	26.035	26.056	32	3	15 20 25 30
AMF 2228	22	22.007	22.028	28	28.035	28.056	34	3	15 20 25 30
AMF 2530	25	25.007	25.028	30	30.035	30.056	39	3.5	20 25 32
AMF 2532	25	25.007	25.028	32	32.043	32.068	39	3.5	20 25 30
AMF 2836	28	28.007	28.028	36	36.043	36.068	44	4	20 25 30
AMF 3038	30	30.007	30.028	38	38.043	38.068	46	4	20 25 30
AMF 3238	32	32.009	32.034	38	38.043	38.068	46	4	20 25 32
AMF 3240	32	32.009	32.034	40	40.043	40.068	48	4	20 25 30
AMF 3545	35	35.009	35.034	45	45.043	45.068	55	5	25 35 40
AMF 3848	38	38.009	38.034	48	48.043	48.068	58	5	25 35
AMF 4046	40	40.009	40.034	46	46.043	46.068	56	5	25 32 40
AMF 4050	40	40.009	40.034	50	50.043	50.068	60	5	25 30 40 50

## FLANGED BUSHES



### Stock sizes and tolerances in mm

Tolerances

Length: L<sub>s</sub> 13

Flange Thickness e j<sub>s</sub> 13.

Flange Diameter D<sub>1</sub> j<sub>s</sub> 13.

Concentricity:

Full indicated movement, D with respect to d;

D ≤ 50 mm, IT9 D > 50 mm, IT10

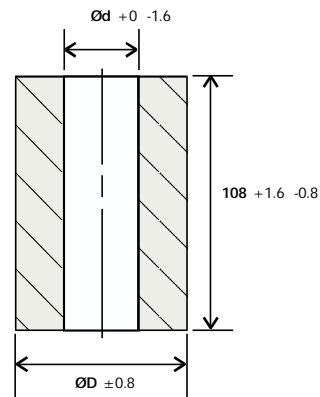
Chamfers:

45° chamfers are incorporated on inside and outside diameters at each end of the bush. Chamfer length varies with bush wall thickness and outside diameter.

Type Ref.	Ød (G7)			ØD (s7)			Ød <sub>1</sub>	e	Basic L
	Basic	Min.	Max.	Basic	Min.	Max.			
AMF 4252	42	42.009	42.048	52	52.053	52.099	62	5	40 50
AMF 4555	45	45.009	45.048	55	55.053	55.099	65	5	35 45 55
AMF 5060	50	50.099	50.048	60	60.053	60.099	70	5	32 40 50

## CORED BARS

Type Ref.	Ød	ØD	Type Ref.	Ød	ØD
AIH102268	16.0	34.9	AIH304668	47.7	73.0
AIH102668	16.0	41.2	AIH305068	47.7	79.3
AIH103468	16.0	53.9	AIH305468	47.7	85.7
AIH104268	16.0	66.6	AIH306668	47.7	104.7
AIH104668	16.0	73.0	AIH344668	54.0	73.0
AIH142668	22.3	41.2	AIH345068	54.0	79.3
AIH143468	22.3	53.9	AIH345468	54.0	85.7
AIH183068	28.6	47.6	AIH345868	54.0	92.0
AIH183068	28.6	53.9	AIH346668	54.0	104.7
AIH184268	28.6	66.6	AIH385068	60.3	79.3
AIH185068	28.6	79.3	AIH386668	60.3	104.7
AIH185468	28.6	85.7	AIH387068	60.3	111.1
AIH223468	35.0	53.9	AIH425468	66.7	85.7
AIH223868	35.0	60.3	AIH425868	66.7	92.0
AIH225868	35.0	92.0	AIH426668	66.7	104.7
AIH263868	41.3	60.3	AIH466268	73.0	98.4
AIH263868	41.3	73.0	AIH466668	73.0	104.7
AIH265868	41.3	92.0	AIH469068*	73.0	142.8
AIH304268	47.7	66.6	AIH506668	79.4	104.7



\* This item is also available in shorter lengths 66.6mm (2 5/8") & 92mm (3 5/8")

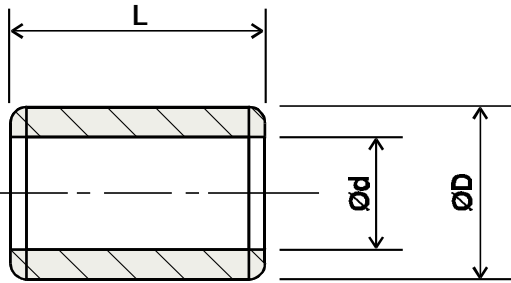
Type Ref. for 2 5/8" = AIH469042

3 5/8" = AIH469058

# Serving All Your Metric Needs...

## OIL IMPREGNATED BRONZE BUSHINGS

### PLAIN BUSHES



#### Stock sizes and tolerances in mm

Tolerances

Length: L<sub>s</sub> 13

Concentricity:

Full indicated movement, D with respect to d;

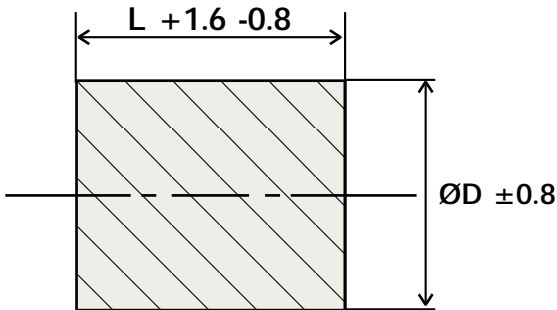
D ≤ 50 mm, IT9 D > 50 mm, IT10

Chamfers:

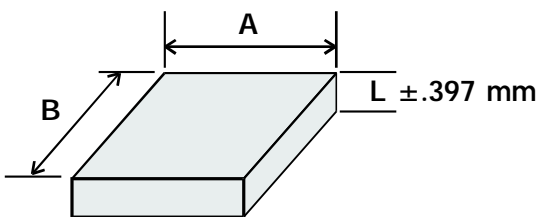
45° chamfers are incorporated on inside and outside diameters at each end of the bush.

Chamfer length varies with bush wall thickness and outside diameter.

### BARS



### PLATES



		Ød (G7)			ØD (s7)			Basic L
Type Ref.	Basic	Min.	Max.	Basic	Min.	Max.		
AMC 0103	1	1.002	1.012	3	3.014	3.024	02	
AMC 0205	2	2.002	2.012	5	5.019	5.031	02 03	
AMC 0206	2.5	2.502	2.512	6	6.019	6.031	02 03	
AMC 0305	3	3.002	3.012	5	5.019	5.031	03 04 06	
AMC 0306	3	3.002	3.012	6	6.019	6.031	03 04	
AMC 0407	4	4.004	4.016	7	7.023	7.038	03 04 06	
AMC 0408	4	4.004	4.016	8	8.023	8.038	03 04 06 08 12	
AMC 0508	5	5.04	5.016	8	8.023	8.038	04 05 08 10 12 16	
AMC 0509	5	5.004	5.016	9	9.023	9.038	04 05 08	
AMC 0609	6	6.004	6.016	9	9.023	9.038	04 06 10 12 16	
AMC 0610	6	6.004	6.016	10	10.023	10.038	04 06 10 12 16	
AMC 0710	7	7.005	7.020	10	10.023	10.038	05 08 10	
AMC 0711	7	7.005	7.020	11	11.028	11.046	05 08 10	
AMC 0811	8	8.005	8.020	11	11.028	11.046	06 08 12	
AMC 0812	8	8.005	8.020	12	12.028	12.046	06 08 12 16 20	
AMC 0814	8	8.005	8.020	14	14.028	14.046	08 12 16 20	
AMC 0912	9	9.005	9.020	12	12.028	12.046	06 10 14	
AMC 0914	9	9.005	9.020	14	14.028	14.046	10 14	
AMC 1013	10	10.005	10.020	13	13.028	13.046	10 16	
AMC 1014	10	10.005	10.020	14	14.028	14.046	08 10 16 20 25	
AMC 1015	10	10.005	10.020	15	15.028	15.046	10 16 20 25	
AMC 1016	10	10.005	10.020	16	16.028	16.046	08 10 16 20 25	
AMC 1215	12	12.006	12.024	15	15.028	15.046	12 16 20 25	
AMC 1216	12	12.006	12.024	16	16.028	16.046	08 12 16 20 25	
AMC 1218	12	12.006	12.024	18	18.028	18.046	08 12 16 20 25	
AMC 1418	14	14.006	14.024	18	18.028	18.046	10 14 20	
AMC 1420	14	14.006	14.024	20	20.035	20.056	10 14 20 30	
AMC 1519	15	15.006	15.024	19	19.035	19.056	10 15 20 25 30	
AMC 1521	15	15.006	15.024	21	21.035	21.056	15 20 25	
AMC 1620	16	16.006	16.024	20	20.035	20.056	12 16 20 25 30	
AMC 1622	16	16.006	16.024	22	22.035	22.056	12 16 20 25 30	
AMC 1822	18	18.006	18.024	22	22.035	22.056	12 18 30	
AMC 1824	18	18.006	18.024	24	24.035	24.056	18 30	
AMC 1825	18	18.006	18.024	25	25.035	25.056	22 30	
AMC 2024	20	20.007	20.028	24	24.035	24.056	16 20 32	
AMC 2025	20	20.007	20.028	25	25.035	25.056	15 20 25 30	
AMC 2026	20	20.007	20.028	26	26.035	26.056	15 20 25 30	
AMC 2028	20	20.007	20.028	28	28.035	28.056	25 30 50	
AMC 2227	22	22.007	22.028	27	27.035	27.056	15 20 25	
AMC 2228	22	22.007	22.028	28	28.035	28.056	15 20 25 30	
AMC 2232	22	22.007	22.028	32	32.043	32.068	20 50	
AMC 2530	25	25.007	25.028	30	30.035	30.056	20 25 30 50	
AMC 2532	25	25.007	25.028	32	32.043	32.068	20 25 30 35 40	
AMC 2535	25	25.007	25.028	35	35.043	35.068	25 35 50	
AMC 2833	28	28.007	28.028	33	33.043	33.068	20 25 30	
AMC 2836	28	28.007	28.028	36	36.043	36.068	20 25 30 40	
AMC 3035	30	30.007	30.028	35	35.043	35.068	20 25 30	
AMC 3038	30	30.007	30.028	38	38.043	38.068	20 25 30 40	
AMC 3040	30	30.007	30.028	40	40.043	40.068	25 35 50	
AMC 3238	32	32.009	32.034	38	38.043	38.068	20 25 30	
AMC 3240	32	32.009	32.034	40	0.043	40.068	20 25 30 40 45	
AMC 3541	35	35.009	35.034	41	41.043	43.068	25 35 40	
AMC 3544	35	35.009	35.034	44	44.043	44.068	22 28 35	
AMC 3545	35	35.009	35.034	45	45.043	45.068	25 35 40 50	
AMC 3642	36	36.009	36.043	42	42.043	42.068	22 28 36 45	
AMC 3645	36	36.009	36.034	45	45.043	45.068	22 28 36 45	
AMC 3844	38	38.009	38.034	44	44.043	44.068	25 35 45	
AMC 3848	38	38.009	38.034	48	48.043	48.068	25 35 45 55	
AMC 4046	40	40.009	40.034	46	46.043	46.068	30 40 50	
AMC 4050	40	40.009	40.034	50	50.043	50.068	25 30 35 40 50 60	
AMC 4248	42	42.009	42.034	48	48.043	48.068	40 50	

		Ød (G8)			ØD (s8)			Basic L
Type Ref.	Basic	Min.	Max.	Basic	Min.	Max.		
AMC 4252	42	42.009	42.048	52	52.053	52.099	30 50 60	
AMC 4551	45	45.009	45.048	51	51.053	51.099	35 45 55	
AMC 4555	45	45.009	45.048	55	55.053	55.099	35 45 55 75	
AMC 4556	45	45.009	45.048	56	56.053	56.099	28 26 45 56	
AMC 4855	48	48.009	48.048	55	55.053	55.099	35 50	
AMC 4858	48	48.009	48.048	58	58.053	58.099	50 70	
AMC 5058	50	50.009	50.048	58	58.053	58.099	35 50	
AMC 5060	50	50.009	50.048	60	60.053	60.099	30 35 40 50 63 70 75	
AMC 5563	55	55.010	55.065	63	63.053	63.099	40 55	
AMC 5565	55	55.010	55.065	65	65.053	65.099	40 55 70	
AMC 6068	60	60.010	60.056	68	68.059	68.015	50 60	
AMC 6070	60	60.010	60.056	70	70.059	70.105	50 60	
AMC 6072	60	60.010	60.056	72	72.059	72.105	50 60 70	
AMC 6370	63	63.010	63.056	70	70.059	70.105	40 50	

■ Represents a deleted stock item, available only while stocks last