

BRITISH METRICS

Metric & British Tapered Thread Grease Fittings

- H1 - Straight
- H2 - 45 Degree
- H3 - 90 Degree



H1



H2

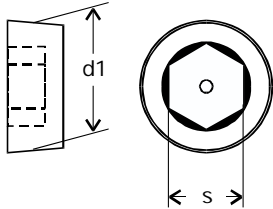


H3

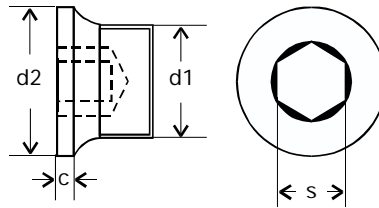
Available Sizes	
METRIC	Dia-Pitch
	5-0.8
	6-1.0
	6-0.75
	8-1.25
	8-1.0
	10-1.5
10-1.0	
12-1.5	
BSPT	1/8-28
	1/4-19
	3/8-19

GREASE FITTING ASSORTMENTS				
Quantity				
Dia-Pitch	H1	H1	H2	H3
5-0.8	25			
6-1.0	100	60	30	15
6-0.75	20			
8-1.25	50	30	10	10
8-1.0	30	20	10	10
8-1.75	10			
10-1.5	30	20	5	5
10-1.0	30	20	10	10
1/8	30			
1/4	20			
	345pc. Kit	265pc. Kit		

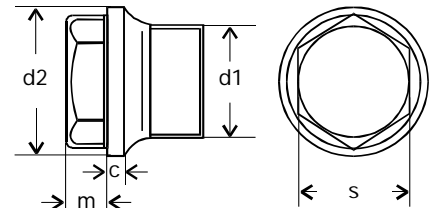
Metric & British Plugs



DIN 906 - Tapered Threads



DIN 908 - Parallel Threads



DIN 910 - Parallel Threads

Sizes Available		
METRIC	BSPT	BSP
Dia-Pitch	DIN 906	908-910
8-1.0		
10-1.0	1/8-28	1/8-28
12-1.5	1/4-19	1/4-19
14-1.5		
16-1.5	3/8-19	3/8-19
18-1.5		
20-1.5	1/2-14	1/2-14
22-1.5		
24-1.5		
26-1.5	3/4-14	3/4-14
30-1.5	1-11	1-11
36-1.5	11/4-11	11/4-11
	11/2-11	1/2-11

All Dimensions In mm							
d1	d1	d2	c	m	s	s	s
906	908-910				906	908	910
8					4		
8	8	14	3	6	5	5	10
10	12	17	3	6	6	6	13
10	12	18	3	6	7	6	13
10	12	19	3	6	7	6	13
10	12	21	3	6	8	8	17
10	12	22	3	6	8	8	17
10	12	23	4	8	8	8	17
10	14	25	4	8	10	10	19
10	14	26	4	8	10	10	19
10	14	27	4	8	10	10	
12	14	29	4	9	12	12	22
12	16	31	4	10	12	12	24
12	16	32	4	10	12	12	24
12	16	36	4	10	17	17	24
12	16	39	5	11	17	17	27
15	16	42	5	11	19	19	27
18	16	49	5	12	22	22	30
20	16	55	5	12	24	24	30