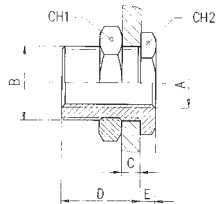


# Bulkhead Connector



Code	A	B	C MAX	D	E	CH1	CH2
3060-M5	M5	M10 x 1	7	10.5	3.5	14	14
3060-1/8	1/8"	M16 x 1.5	10	14	4	22	19
3060-1/4	1/4"	M20 x 1.5	16	21	4	27	24
3060-3/8	3/8"	M26 x 1.5	15	21	5	32	30
3060-1/2	1/2"	M28 x 1.5	21	27	6	36	32