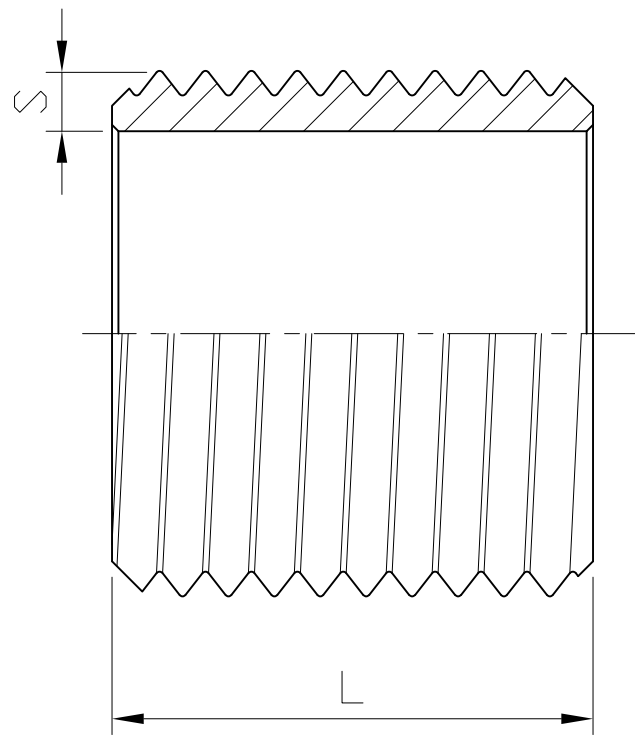


THREAD NIPPLE



SIZE	1/8"		1/4"		3/8"		1/2"		3/4"		1"		1-1/4"		1-1/2"		2"		2-1/2"		3"		4"	
	mm	in	mm	in	mm	in	mm	in	mm	in	mm	in	mm	in	mm	in	mm	in	mm	in	mm	in	mm	in
S	1.7	0.07	2	0.08	1.9	0.07	2.3	0.09	2.5	0.1	3.2	0.13	3.2	0.13	3.2	0.13	3.6	0.14	3.6	0.14	4	0.16	4.5	0.18
L	16	0.63	18	0.71	22	0.87	25	0.98	30	1.18	35	1.38	38	1.5	38	1.5	45	1.77	55	2.17	60	2.36	70	2.76

Tolerance: $\pm 0.5\text{mm}(1/8''\sim 2'')$
 $\pm 0.8\text{mm}(2\text{-}1/2''\sim 4'')$